

# MESSAGES of HOPE

2008 Volume 2

## Jayson's Story

Nearly every morning, Brenda Flores' fiancé Jayson Lenzsch leaves the Philadelphia Ronald McDonald House at 4 am to drive to his job in New Jersey while she prepares to go to the hospital. This has been their routine for over a year now, since their son Jayson, Jr. was born with Hypoplastic Left Heart Syndrome (HLHS). "He's never been home," Brenda says of her son, Jayson. "He's spent his whole life in a hospital room."

Three hours after his birth in May of 2007, Jayson was transported to The Children's Hospital of Philadelphia to have the first of three required surgeries to treat his heart, which is underdeveloped on the left side. Two major and several minor surgeries later – the result of infection and complications – Jayson remains in the hospital, on a ventilator and preparing for a pacemaker. "It's hard to see your child like this," Brenda says, as she rocks Jayson in her arms. "The little smiles are what make you strong."

Brenda had never heard of PRMH until a social worker at the hospital told her about it. "Now I don't think I could handle it if we weren't staying here," she says. "Having a place to relax, to sleep for a while, is so helpful. Being with other people who understand is nice." This ongoing support from fellow House families has made such a difference to Brenda,

who has also been hospitalized twice during her stay as a result of her diabetes. "Sometimes you feel like you are the only person going through this," she says. "Then you look around and see you are not the only one. You're not alone."

Brenda hopes to have Jayson home for the first time by July, before her next birthday – a perfect present, not only for her but for her ten-year-old

daughter Destiny as well, who now only gets to visit on the weekends. Yet the Flores-Lenzsch family is familiar to waiting for the things they want most. "We couldn't even hold Jayson for his first three months," Brenda says. Now, she waits to hear his first words. "He can't talk on the ventilator. I cannot hear him say 'mom.'"

Still, Brenda continues to draw her inspiration from her son, who loves the cartoon Oswald and throws kisses to his family. "My son has shown me that if he can wake up every day going through what he has gone through and fight, then I can have patience." And until the day that Brenda brings Jayson home, she will have a place at the Philadelphia Ronald McDonald House. "This is my second home."

If you would like to help families like Jayson's, please consider making a donation online at [www.philarmh.org](http://www.philarmh.org).



**"Sometimes you feel like you are the only person going through this. Then you look around and see you are not the only one. You're not alone."**



*Our sincere appreciation to St. Christopher's Foundation for Children for designating PRMH as one of the beneficiaries of their annual Apple Blossom Ball in May. The Foundation's Board (pictured above) awarded a \$100,000 operating grant for our Front & Erie House.*

## Front & Erie House Reopens

In honor of the brave and spirited children who battle critical illnesses under our roofs, our organization was determined to overcome a setback this winter – the closure of our new House at Front & Erie after just two weeks of operation due to water damage caused by a burst sprinkler pipe. We are happy to announce that our Front & Erie House reopened its doors to families on April 21, 2008. Thank you to all of the subcontractors and dedicated volunteers who worked to help us reopen. A special thank you to the following companies for their in-kind donations: Armstrong, Benjamin Moore Paint, Lumber Liquidators, Orion Construction, and Space Design, Inc. Now that we are back in business, we are looking for new volunteers to support our daily operations. If you are interested in learning about volunteer opportunities, please contact Linda Parry at 215.387.8406 or [lindap@philarmh.org](mailto:lindap@philarmh.org).



*Our reopening week featured a reception thanking donors including the dedicated members of Katie's Crusaders.*

# Our People

## Board of Directors

Chairman Emeritus	Audrey E. Evans, M.D.
President	Joan Emmi
Vice Presidents	Honorable Bradley K. Moss Marlene Weinberg
Secretary	Salli Mickelberg
Treasurer	Eric Haskell
Honorary Life Members	Madlyn Abramson Jimmy Murray
Directors	
Mike Anton	Jim Kepple
Wilson J. C. Braun, Jr.	Michael McAleer
Judy Brown	David Niggeman
J. Drew Coyle	William Parkes
Lynn Deming	Gini Peltz
John Durante	Christopher Roak
Alfred Ferraro	Suzanne Root
Chris Gabriel	Anne Scardino
Carol Gleklen	Stephanie Smith

## PRMH Staff

Executive Director	Susan Campbell
Accounting Manager	Sally Courant
Bookkeeper	Eileen Filipone
Database Administrator	Jennifer Donlevie
Director of Development	Juan Guerra
Director of Volunteers	Linda Parry
Executive Assistant	Jeanette Woehr
Facilities Manager	Barry Owen
Family Room Coordinator	Deborah O'Donnell
House Manager – Chestnut Street	Doug Metcalfe
House Manager – Front and Erie	Carolann Costa
Resident Manager – Chestnut Street	Jonathan Gaynor
Resident Manager – Front and Erie	Maurice Taylor
Social Worker – Chestnut Street	Helen Reese, MSS, LSW
Social Worker – Front and Erie	Jeanne Ann Reynolds, MSW, LSW
Special Events Coordinator	Kelly Hays
Housekeepers	
Felicia Brown	Myriam Rivera
Christine Burrows	Brenda Robinson
Martha Moore	Irene Small
Rob Pouncy	Kay Welding
Maintenance	
Frank Webster	Bill Wilkinson



## President's Message

When I began my term as Board President only four years ago, I wouldn't have envisioned the kind of growth and progress I've been honored to have been a part of during my tenure. Opening the Family Rooms at The Children's Hospital of Philadelphia and working to open our second Philadelphia Ronald McDonald House adjacent to St. Christopher's Hospital have been made

possible by the generous gifts from our donors, the support of the community, and most importantly, the commitment of the Board and staff of the PRMH. The hours and heartfelt dedication that have poured forth in the PRMH community has been staggering and inspiring. Needless to say, growth always comes with challenges, but keeping close our mission of helping serve families in need has united this group in meaningful ways.

As I look towards the end of my term, I want to honor those who have honored this mission and have allowed me to share the joy of continuing the mission of The House That Love Built. I especially want to recognize and thank Susan Campbell, our new Executive Director, who has been a tireless leader. Susan started at PRMH as a volunteer, became a weekend manager, was hired as Associate Director, and, less than a year ago, was promoted to her current position as Executive Director. Susan is supported by an incredible staff: Jeanette Woehr, Sally Courant, Jennifer Donlevie, and Eileen Filipone who keep the back office humming.

A few short weeks after opening the new House at Front and Erie, a water pipe froze and we needed to close the house for repairs. Recently we were able to reopen and begin again to serve families whose children are being treated at hospitals in that area of the city. A special thanks to the Front and Erie Operations team of Carolann Costa, Jeanne Ann Reynolds, Maurice Taylor, and of course our Property Team led by Barry Owen, with great support from Frank Webster, Bill Wilkinson, and many, many volunteers. Without their hard work and long hours we would have been unable to reopen in just three months.

While many of us were working on the emergency at Front and Erie, our Chestnut Street staff served as an invaluable backbone to the maintenance and operations of both the Houses and the Family Rooms at CHOP. I would be remiss in failing to recognize the continued dedication of Helen Reese, Doug Metcalfe, Jonathan Gaynor, Linda Parry, Debbie O'Donnell, and of course our Housekeeping crew of Rob Pouncy, Miriam Rivera, Irene Small, Martha Moore, Kay Welding, Brenda Robinson, Christine Burrows, and Felicia Brown. Last but certainly not least, I want to thank our new Development team members Juan Guerra and Kelly Hays.

I am also very thankful to the Board of the Philadelphia Ronald McDonald House for their dedication and commitment to the mission of serving families in their times of crisis. Without their foresight, none of this growth would have been possible.

I am also indebted to the Friends of the Philadelphia Ronald McDonald House and their president Judy Brown for their tireless fundraising. They are a fabulous and committed group of women.

Mostly, however, I am thankful to you, the donor. You are the heart and soul of this organization. Your contributions, whether monetary or service-oriented, make possible each and every goal we set forth. Each gift, no matter the size, makes a significant difference to the family of a critically ill child. Thank you for your invaluable commitment to the mission of serving families at the Philadelphia Ronald McDonald House.

It has been an interesting and challenging four years, and I have been honored to serve as President of this Board.

**Joan Emmi**  
PRMH Board President



**Philadelphia magazine's  
DESIGN  
HOME 2008**

The Philadelphia Ronald McDonald House announces our participation as the official beneficiary of *Philadelphia* magazine's Design Home 2008®. Set for public showings during the month of September, this is *Philadelphia* magazine's seventh home design project.

Mark your calendars to visit the Design Home from September 4 to October 5, 2008. Hours are Thursday from 12 pm to 8 pm and Friday to Monday from 11 am to 4 pm Available through the Philadelphia Ronald McDonald House web site, [www.philarmh.org](http://www.philarmh.org), tickets are \$20 and go on sale August 1, 2008.

Constructed by Guidi Homes, *Philadelphia* magazine's Design Home 2008® is located in the Enclave at Gwynedd in Lower Gwynedd,



*PRMH welcomed the project partners from the Design Home to a special luncheon at the House in April, sponsored by Event Chairperson Connie Willson. From left to right: Phil Guidi, Jr. and Brad Guidi, Guidi Homes; Connie Willson; Sherry Litwer, Philadelphia magazine; Pete Guidi, Guidi Homes; Susan Campbell, PRMH Executive Director; Joan Emmi, PRMH Board President; Juan Guerra, Director of Development. Tom Weston of McIntyre Capron and Associates and David Lipsen of Philadelphia magazine also attended.*

Montgomery County. The home is designed by McIntyre Capron and Associates, decorated by Lisa Stanley of Key Interiors, and will have the Old World feel of a European country estate home. It features a first floor master bedroom, a two story family room, dual courtyards with water features and pool, as well as many other state of the art amenities.

The Design Home is destined to become a home just as the Philadelphia Ronald McDonald House is a home to the many families we serve. Our volunteers will play an important role in the public showings of the Design Home, serving as

official greeters and hosts to the public while providing information on the many construction and vendor aspects of the Design Home.

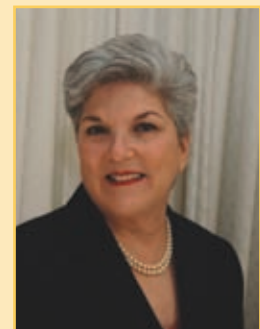
Many volunteers are needed to make *Philadelphia* magazine's Design Home 2008® a success. We ask that everyone associated with PRMH consider being a volunteer. Visit our web site at [www.philarmh.org](http://www.philarmh.org) or [www.phillymag.com](http://www.phillymag.com) for ticket, volunteer, and special event information and to view the house as it develops.



## Volunteer Spotlight

*Many thanks to our long-term volunteers (shown at the 2008 Volunteer Appreciation Dinner) who have served the Philadelphia Ronald McDonald House for over 10 years:*

- 34 Years – Our Original Volunteers** Audrey Evans, Gini Peltz, and Jimmy Murray  
**20 to 29 Years** Carl Franklin, Mary Ann Franklin, Gary Clemente, Suzanne Root, Joan Emmi, and Dotti Escuti  
**10 to 19 years** Lynn Deming, Sheila Gladstone, Salli Mickelberg, Iris Braunstein, Caroline Coleman, Diane Morris, Brad Moss, Helene Meltzer, Fran Schwartz, Karen Davis, Tillie Garczynski, Carol Glecklen, Barbara Krautheim, Nellie Marasco, John Newman, Ellen Rose, Conrad Strabone, Ellie Thompson, Faith Zarro, Pat Zarro, Bernice Baker, Paul Barnett, Elaine Becker, Cecelia Drum, Linda Lyttle, Harry Neuman, Jerry Rose, Bob Brooks, Fal DeSaint Phalle, Lorrie Mitchell, Karen Rauscher, Nancy Rauscher, Kim Wall, Suzanne Walsh, Marlene Weinberg, Mona Zaoudeh, Marguerite Boyd, Judy Feldman, Harriett Gross, Mary Anne Pease, Anne Scardino, Jennifer Seiler, Dolores Tartt, and Connie Willson



*Congratulations to Marlene Weinberg, Vice President of the PRMH Board of Directors, for being selected as a recipient of the 2008 Pennsylvania's Best 50 Women in Business Award. Marlene is an owner/operator of five McDonald's restaurants in the Philadelphia region and an avid supporter of the House through her role as Chair of our Capital Campaign Committee and Co-Chair of our Camp Committee.*

# The Friends' Continued Commitment...



From left to right:  
Ronald McDonald;  
Lisa Mitchell,  
Nurse Manager;  
Judy Brown,  
President of the  
Friends of the PRMH;  
and Deborah O'Donnell,  
Family Room Coordinator.



The Friends of the Philadelphia Ronald McDonald House at the Cardiac Room opening. From left to right: Salli Mickelberg, Ronald McDonald, Judy Brown, JoAnn Friedman, and Sherry Zlotkinoff.

## New Ronald McDonald Family Room Opens at The Children's Hospital

On March 12, 2008, the new Ronald McDonald Family Room officially opened to serve families with children at the Cardiac Center of The Children's Hospital of Philadelphia. The opening was a celebration of months of hard work and made possible through our partnership with Ronald McDonald House Charities of the Philadelphia Region, Inc.® and The Children's Hospital of Philadelphia, both of whom funded the capital renovations. This new Family Room is the second that PRMH has opened at CHOP, joining the one in the Oncology Center.

Through the generosity of the Friends of the Philadelphia Ronald McDonald House, chaired at the onset of the project by Friends Co-Presidents, JoAnn Friedman and Robin Lassin, the Family Room has ongoing operating funds. We want to thank the team of individuals including John Hibberd, architect; Pat Clement, interior design; Tom Tobin, of L.F. Driscoll; Lynne Tracey of CHOP; and the cardiac user group who worked to bring this project together.

Annually, the cardiac team at CHOP performs more than 900 cardiac surgeries and more than 2,500 children undergo cardiac anesthetics. On average, forty percent of these patients arrive from outside the hospital's geographic area and many are long term, waiting for heart transplants. Because of the severity of many of the children's conditions, parents often choose to remain at the bed side throughout their stay.

The convenient location enables patients' families to easily access the Family Room, avail themselves to its amenities and support, and still be able to stay within seconds of their child's bed side. As the Family Room is open 24 hours a day, every day of the year including holidays, it provides a much needed respite space for families during their child's stay. Families can watch a DVD, check email, enjoy a cup of coffee or a meal, do some laundry, or just take a quick break in the Family Room and engage in conversation with other families—all activities that can make a significant difference to a family spending night after night in the hospital.

The Friend's President Judy Brown and the Friends Council are still hard at work developing much needed programming and cultivating ongoing support for the Cardiac Family Room. For more information on how you may be able to help the Family Room, please contact Kelly Hays at [kelly@philarmh.org](mailto:kelly@philarmh.org) or JoAnn Friedman at [jgfdesigns@aol.com](mailto:jgfdesigns@aol.com).



Matthew Brand, shown with Cindy Kerr and his father William, shows off the new pillowcase he made in the Family Room.



Left to right from Roy's Restaurant are: Artt Ward, Melanie Williams, Melissa Benjamin, and Jeremy Ball.

**H**it 'em for the House was a huge success this year! The Friends express our sincere appreciation to Evie & Ron Krancer for generously supporting Hit 'em for the House as our lead sponsor again this year. We are grateful for the Krancer's lead sponsorship commitment over the years. A complete list of Hit 'em for the House donors as well as pictures from the event will be included in our next newsletter issue so you can read all about it.

**A** special thank you to all donors who have contributed to the Joan Goldenberg Memorial Fund. The Friends will be working this summer to designate a memorial in Joan's memory.

*continued on page 5*



## 2008 Ronald McDonald Camp



A special thank you to Sheri Resnik, a dedicated PRMH volunteer, for organizing a "Girls Nite Out" benefiting our Ronald McDonald Camp. The fundraiser was a huge success, raising over \$12,000. The evening starred local author Kelly Simmons, who discussed her book *Standing Still at Origin & Ash in Bryn Mawr*. Thank you to Marcie Risk, owner, *Origin & Ash* (left); Kelly Simmons, author (center); and Sheri Resnik, organizer (right) for all of their time and efforts.

Summer is approaching which means that throughout the tri-state area approximately 170 kids are contemplating what to pack for the 2008 Ronald McDonald Camp. RMC is our one week residential camp for children who have, or who have had, cancer. Each patient attends camp free of charge and they can to invite one brother or sister at a nominal fee. Every year, our campers look forward to the week in August when they can set aside their medical issues, participate in a host of activities, make new acquaintances and reunite with old friends.

Throughout the year, our team of directors and our volunteer camp committee have been working diligently to ensure the success of RMC 2008. We are very excited about incorporating a Mardi Gras theme into camp this year. With a little help from camp friends like you, we hope to exceed every one of our camper's expectations and create memories that will last a lifetime.

If you would like to participate in the RMC 2008 experience, here are a few ways that you can help:

- Adopt-A-Camper for \$500 or consider making any monetary contribution towards the week at camp.
- Be a counselor. We have a special need for male counselors between the ages of 20 and 29.
- Sponsor our drum circle. To make opening night a truly special event, we will conduct a drum circle with a percussion instrument for each of our campers. We are in the process of fundraising, but we still need a sponsor.

For more information on Ronald McDonald Camp, please call Carolann Costa at 215.291.0907 or visit our website at [www.philarmh.org](http://www.philarmh.org).

### As part of the 76ers Read for Ronald program, the following schools raised over \$86,000 for the House through their reading efforts:

Abington Friends Middle School	Penn Central Middle School	Springfield Middle School
Agnes Irwin Lower School	Penn Wynne Elementary School	Springside Middle School
Agnes Irwin Middle School	Perelman Jewish Day School	Springside Lower School
Cheltenham Elementary School	Pocopson Elementary School	St. Denis School
Erdenheim Elementary School	Radnor Elementary School	The Wyndcroft School
Friends' Central Lower School	Rose Tree Elementary School	Upper Merion Middle School
Girard College	ShIPLEY Lower School	Wayne Elementary School
Ithan Elementary School	Sol Feinstone Elementary School	Wrightstown Elementary School
KD Markley Elementary School		

*Thank you to all of the schools, teachers, parents, volunteers, and students who made this year such a success. If your school wants to get involved in helping our families while encouraging your students to read, contact Kelly Hays at [kelly@philarmh.org](mailto:kelly@philarmh.org).*



Erdenheim Elementary School, pictured above with Hip Hop, 76ers Basketball Ambassador World B. Free, 76ers star Lou Williams, and Ronald McDonald, was the top fundraiser this year in the 76ers Read for Ronald program. Thank you to the 76ers organization for their ongoing support.

## Family Room continued from page 4

Local businesses are answering the call to support both the Cardiac and the Oncology Family Rooms. Roy's Restaurant provides dinner for 100 parents on the last Wednesday of every month and considers their ongoing donation to the House an integral part of their operation. "One of Roy's commitments is active presence and support in our community, with a special focus on the well-being of youth," says Managing Partner Melissa Benjamin. "The Ronald McDonald House is an excellent organization that lives by this commitment, and we feel it is an honor to be a part of this organization."

In addition to the monthly dinners, Roy's contributed an array of desserts for the opening of the Cardiac Family Room. Other local restaurants who are leading by

example include Romano's Macaroni Grill, who also provides a monthly dinner for 50 people, and Chili's Grill and Bar, who provides appetizers for the bi-weekly parent support groups offered at the Family Room.

Keurig Incorporated has also gone a long way to make families' times in the Cardiac Center Family Room more comfortable with the donation of a Keurig Home Brewing Machine, as well as ongoing monthly donations of coffee and tea. Individuals and groups also get involved in making the Family Room more like home. Big Hearts, Little Hearts, a group of parents of past and current patients at the CHOP Cardiac Center, recently prepared and delivered a catered meal to the Cardiac Family Room for a full lunch buffet.

The Family Rooms also offer opportunities for children and families to have a little fun, and even learn something new. In April, Cindy Kerr and her team of

volunteers from ConKerr Cancer brought a case for smiles to the Oncology Family Room. Children spent the afternoon making pillowcases thanks to Cindy's program, which has made over 27,000 pillowcases for children with cancer over the last two and a half years. Matthew Brand, age 17, enjoyed sewing for the first time. "It was really fun," he says, "I like the pillowcases because they make the room more cheerful than just a plain hospital room."

Every Monday, Chae Hui of Perfect Blossom Yoga, a certified yoga instructor, provides parents with instruction in Yoga. Each week new parents join Chae to learn stress reducing exercises and are able to continue to practice in their rooms thanks to Chae's generous donation of yoga mats and blocks for them to use. If you have an activity to make our families' days a littler brighter, please contact Kelly Hays at [kelly@philarmh.org](mailto:kelly@philarmh.org).

# We're so thankful for...



Students from Agnes Irwin Lower School, pictured, visited the House in April and brought many generous donations for our families, including money raised from selling friendship bracelets.

Thanks to the students of Penn Ryn, St. Denis, and Hillside Avenue Schools for their contributions to the House this spring, as well.

The Caroff Family presents the proceeds of the 10th Food Check Out Day to Anne Scardino, event organizer, along with PRMH representatives Jim Murray and Juan Guerra, at Freddy Hill Farms in Lansdale, PA. PA Farm Bureau members donated food and money, totaling \$12,700, to PRMH.



Each year, outside organizations host events to help raise money for our families. We are so grateful for these third-party fundraisers, such as the party hosted by Tom Erickson of Medtronic, Inc., shown here with his team. They presented a check for \$2,750 to the House in April.

Other examples include the SMPS Giving Back Holiday Bash and Silent Auction, hosted by the Philadelphia Chapter of the Society for Marketing Professional Services, which raised over \$3,400 for the House.

Also, in addition to participating in the Guest Chef Program, Culinary Arts students from Eastern Center for Arts and Technology donated \$500 from their fundraising efforts.

Do you have a great idea for a fundraiser? Want to make your next event extra special by raising money for PRMH? Contact Juan Guerra at [juan@philarmh.org](mailto:juan@philarmh.org).



With baseball season in full swing, we thank PA District 28 Baseball for once again organizing the Annual John Snyder Memorial Big League Baseball Tournament. In the past 11 years, this event – held in memory of player John Snyder who was helped by the House – has raised nearly \$60,000 for PRMH.



In January, McDonald's Vice Chairman and CEO Jim Skinner paid a visit to PRMH.

Allison Talarico and Marwa Al Janahai, our two guests shown here with Mr. Skinner, gave him a tour of our House.



Over 150 supporters of the Philadelphia Ronald McDonald House ushered in the Chinese Lunar New Year at the Susanna Foo Restaurant in Radnor in February. Chef Foo and her staff generously served up an extraordinary feast accompanied by authentic Chinese folk music and the talented young dancers from The Ding Hao Chinese School.

## Donations from the Heart

1/1/08 – 4/30/08

### Donations \$50,000 and above

Friends of Phila. Ronald McDonald House  
Ronald McDonald House Charities  
of the Philadelphia Region

### Donations \$10,000 - \$49,999

The Lenfest Foundation  
Mr. and Mrs. Ronald A. Krancer

### Donations \$5,000 - \$9,999

CIBC World Markets Corp.  
Keystone Foods Corporation  
John Snyder Memorial Baseball Tournament

### Donations \$1,000 - \$4,999

Ancient Order of Hibernians -  
Notre Dame Div. 1 Montco  
Anonymous  
Mr. Clarence Berger  
Ms. Lauren Blum  
buckconsultants  
Bucks County Farm Bureau  
Britiani Marie Creciu Memorial Fund  
Mr. Antonio DeGennaro  
ESC for Tri-State Racquetball Tournament  
Susanna Foo's Chinese New Year's  
Celebration

Mr. James Goldstein  
Ms. Alison E. Kellock  
Ms. Michele Lloyd  
Lor-Mar Mechanical Services  
Mr. and Mrs. Michael McAleer  
Medtronic Foundation and Tom Erickson  
& Friends  
Neshaminy of Warwick Presbyterian Church  
Mr. Romo Otterson  
Ms. Suzanne Patterson  
Mr. and Mrs. Eric Pomerantz  
Mrs. Carole Saltzman  
Ms. Anne Scardino  
SMPS Philadelphia Chapter  
Mr. and Mrs. David J. Steinberg  
50th Wedding Anniversary Tribute  
Mr. Louis To  
Mr. Philip W. Twietmeyer and Ms. Joanne  
Mastriana

### Donations \$500 - \$999

Mr. and Mrs. Mark Abissi  
Ms. Amy Abrams  
Ms. Courtney A. Altemus  
Drs. Paul B. Anderson  
Ascensus

Mr. and Mrs. Scott H. Bailey  
Ms. Lauren E. Bogen  
Ms. Ellen R. Boscov  
Mr. and Mrs. James F. Brose  
Bucks Central Church  
Mr. and Mrs. Joseph J. Centeno  
Chester Delaware County Farm Bureau  
Mr. Patrick Coyne  
Ava Desiderato  
Mr. and Mrs. John A. Dinome  
Mr. and Mrs. Terry Dulanelly  
Mr. and Mrs. John Durante  
Feeney's Nursery, Inc.  
Glemser Technologies  
Ms. Nancy J. Goldberg-Vegotsky  
Golden-Sylvania Link No. 50  
Heidel Hollow Farm, Inc.  
Ms. Melanie M. Hogue  
Indian Lane Elementary School  
Mr. Robert S. Kile  
John Henry Kurtz Memorial Fund  
Lehigh County Farm Bureau  
Mr. and Mrs. Jon Lundy  
Samuel P. Mandell Foundation  
McDonald's of Bensalem

Mr. Steven Menson  
Merck Employee Giving Campaign  
Lindenmeyr Munroe  
Mr. Bernard O'Neill  
Mr. Romo Otterson  
Mr. and Mrs. Stuart S. Peltz  
Performance Lighting Inc.  
Port Authority PBA, Inc.  
Prudential Foundation Matching Gifts  
Royal Arcanum - Integrity Council  
Ms. Karen Ryan  
Mr. Kevin C. Schildt  
Mr. and Mrs. Alan Shropshire  
Siemens Caring Hands Foundation  
Mr. and Mrs. John C. Snyder  
Spring Ford Intermediate School -  
Home and School Association  
State Farm Companies Foundation  
Mr. and Mrs. Joseph R. Stefano  
Matthew Thorsen Memorial Fund  
Tehickon Middle School  
Effendi Ortiz Toro  
Verizon Foundation  
Mrs. Marlene Weinberg

Due to space limitations, we are unable to list donations of less than \$500.



Jackie Chamberlain, age 6, greets Hip Hop the 76ers Mascot at the Philadelphia 76ers sponsored Easter Egg Hunt at the House.



Dana Wiles, age 3, plays with a handmade carousel created and donated by George Reed.



A friendly green puppy dog, along with a troop of animals from the Zoo on Wheels, came to visit the House in March to kick off our new partnership with the Philadelphia Zoo. Stacey's Face Painting transformed Lucian Fritchman, shown with his parents. Thanks to an anonymous donor, the Philadelphia Zoo presented our families with 300 zoo tickets.



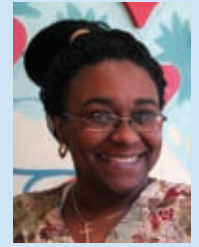
Ringling Brothers and Barnum and Bailey Circus came to town in April bearing gifts, thanks to Comcast-Spectacor and Feld Entertainment. Families painted a large tiger statue that now graces our front lawn. Joseph Wieney, pictured, takes a break to clown around with his new friends.



Tamer Shoukry, age 13, with his uncle Mohammed Omar, photographed by Erinn Aloï of A Fresh Focus Photography. Erinn generously donated her time to take portraits for Mother's Day at the House.



We welcome Eileen Filpone to the staff as the Bookkeeper.



Felicia Brown has joined the housekeeping staff as the Bookkeeper.



Kelly Hays has joined PRMH as the Special Events Coordinator.



Jeanne Ann Reynolds, MSW, LSW, has joined our staff as the Social Worker at Front & Erie.



PRMH has three new interns from Drexel University to welcome to our team: Drew Senko, Madeline Bergman, and Chris Ingram.

## Guest Chefs 1/1/08 – 4/30/08

- A Esposito Meats
- Abner's
- Adath Israel Sisterhood
- Adelphia Lions Club
- APO chapter at Penn
- Barry W. Owen and Family
- Barson's Friends and Family
- Berthcsi Family
- Beth Am Synagogue
- Bishop Shanahan Girls Basketball Team
- Bradberry Family
- Camp Counselors
- Capuano Family
- Card Club
- Carol, Joan, and Esther
- CATP and Friends
- CBI Group
- Cebenka Family
- Center School Faculty
- Charmaine Coulter
- Cheer Squad Shipley Middle School
- Children's Healthcare Associates
- Chris and Friends
- Christ Lutheran Church
- Comcast Marketing Media Services
- Community Service of Adath Jeshurun
- Delta Mu from the Academy of the New Church



- Division of GI, Hepatology and Nutrition at CHOP
- E.T Richardson Middle School - Youth Alive Club
- Eastern Center for Arts and Technology
- EDS
- Education Club
- Emergency Aid of Pennsylvania
- Friends Select Lower Service Committee
- Friesen Family
- Gerri Toscano and Friends
- Gerry's Gang
- Gerson Family
- Girl Scout Troop 374
- Girl Scout Troop 1641
- Girl Scout Troop 7776
- Girl Scouts of Wenonah, NJ
- Golden Girls
- Goldman Sachs
- Grace Covenant Church
- H&R Block
- Holy Martyrs Mission Awareness Program
- IBC
- Independent Insurance Advisors Inc.
- Institute for Continuing Healthcare Education
- Joan Kurtz and family
- Johnson's and Friends
- JP Morgan Chase
- Judy Brown and AJ Synagogue
- Junior League of Philadelphia
- Key Club Gateway High School
- KPMG



- La Famiglia de Fratelli
- Leigh Steinberg Family and Friends
- Lihotz Family
- Lisa Vernacchio and Family
- Lockheed Martin King of Prussia
- Lockheed Martin-Moorestown
- Lynn Deming and Anne Scardino and Friends
- Maher Family
- Max and Friends
- Melissa and Friends
- Merrill Lynch
- MMA
- Negril Caribbean Grill
- Newtown Square Presbyterian Church
- NICU Nurses - St. Christopher's Hospital
- Nina and Alan Glickman
- Notre Dame Club
- Oak Lane Presbyterian Church
- Onyx Senior Honor Society
- Penn Circle K
- Penn Post-bac Society
- Philadelphia Cares
- Philadelphia College of Osteopathic Medicine
- Philadelphia Flying Phoenix Dragonboat Team
- Philadelphia Magazine
- Philadelphia Zoo Wednesday Docents
- Powelton Pizza
- Radnor Township Education Association
- Recipe Club
- Rishaee and Lori



- Rita Gock and Friends
- Romano's Macaroni Grill - Steve Katz
- Roy's Restaurant
- Rutgers Camden Student Athletes Committee
- Saint Althonsus Parish
- Saint Luke's CYO
- Sharon Shapiro and Friends
- Shipley School Students
- Siemens
- St. Chris Oncology Clinic
- St. Dorothy's Service Group
- St. Margaret Kid Kare
- Steinberg Family and Friends
- Sunday Morning Volunteers
- Sweet Lucy's Smokehouse
- Taryn and Friends
- Teich Family
- The Graham Company
- Total Wellness
- Trion
- Underground
- University of Sciences
- UPenn Health System
- UPenn Hillel
- Villanova University
- Vizza and Trabbold Families
- West Catholic High School
- West Council Pioneers
- Westtown Thornbury Elementary School
- Wharton School Community Service Group





3925 Chestnut Street, Philadelphia, PA 19104  
215-387-8406 www.philarmh.org

Return Service Requested

Non-Profit Org.  
U.S. Postage  
**PAID**  
Philadelphia, PA  
Permit #1891

**Visit the new Philadelphia  
Ronald McDonald House website  
at [www.philarmh.org](http://www.philarmh.org).**

*You can now donate online and start  
supporting our families in just a few clicks.*

*Also, stop by [www.goodsearch.com](http://www.goodsearch.com)  
and put your shopping to good use!  
Every time you search or shop, the House  
earns money to help more families!*



### Upcoming Events

[www.philarmh.org](http://www.philarmh.org) for more details



PHILADELPHIA  
Ronald McDonald House

### Sept. 4 – Oct. 5

#### **Philadelphia magazine Design Home®**

Tour the luxurious 2008 *Philadelphia* magazine  
Design Home® in Lower Gwynedd, PA.

Tickets are \$20 at [www.philarmh.org](http://www.philarmh.org) and  
benefit PRMH.

*Read more on page 3.*

### Oct. 13

#### **The Faces of Hope Luncheon**

The Faces of Hope Luncheon is a new fundraiser for The Philadelphia Ronald McDonald House. This event will be held at the Hilton Inn at Penn on Monday, October 13, from 12:00 pm to 1:30 pm It includes lunch, a film, and heartfelt presentations on the work of The Philadelphia Ronald McDonald House. We are looking for individuals who can assist us by becoming Table Captains. If you would like to participate in this *invitation only* event, please call our Special Events Coordinator, Kelly Hays, at 215.387.8406.



*We are proud to announce that Charity Navigator,  
America's premier independent charity evaluator, has  
awarded PRMH their coveted 4 Star Rating.*

Summer has arrived—it is time for many to enjoy vacation! Yet during the summertime, the Philadelphia Ronald McDonald House is at its most crowded. Please don't take a vacation from your generosity towards our families; consider donating any of the following items that we need most during the summer:

- Breakfast cereal
- Individually packed snack items (pudding, jello, applesauce, granola bars, cookies, dried fruits)
- Canned meats (tuna, chicken, turkey, shrimp, crab, salmon)
- Extra large Tupperware containers
- Museum, movies, sporting events, and concert tickets
- SEPTA tokens
- Long distance phone cards

*You may have noticed that we have started folding our newsletter. This simple change saves us over 40 cents per mailing on postage and that means more of your donations go to supporting our families!*